

FW SAVANNAH 6644

DESIGNER COLLECTION | FERGUSON PROMO MODEL

H | S

PVC SYSTEMS INCLUDE:

- 4 Fully directional adjustable PVC jets
- 6 Swirling PVC jets
- Anti-vortex safety suction
- Color matched system trim
- Rigid PVC piping
- Self draining pump and system
- Soft Touch electronic on/off control with 30-minute integral times
- 2.25 HP single speed pump
- Whirlpool system requires 20 Amp Dedicated GFCI



Soft, supple curves are the outstanding feature of the Savannah. Large enough for two, the molded armrests make this tub a welcome retreat for those who want to pamper themselves. The Savannah has six fully recessed swirling back jets. Soaking and Thermal Air models will not have back jet recesses. Visit <http://www.hydrosystem.com> for more details on our options and accessories.

FW SAVANNAH 6644

DESIGNER COLLECTION | FERGUSON PROMO MODEL

H|S

As SHOWN:

Whirlpool option with standard jet location

FEATURES SHOWN:

- Jets
- Overflow (not included)

AVAILABLE SYSTEMS:

- Soaking tub only
- Whirlpool
- Thermal Air
- Combo

SIZE:

66.44.22

WATER CAPACITY:

80 Gallons

WEIGHT:

90-130- Pounds

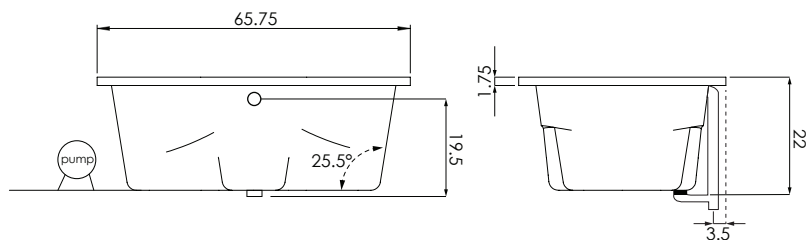
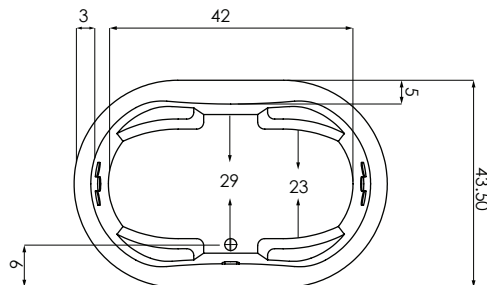
MODEL 6644 DIMENSIONS:

- (L)ength- 66"
- (W)idth- 44"
- (H)eight Finish- 22"



ACRYLIC TUB

- Extra thick reinforced fiberglass
- Pre-wired pump on pump platform (standard pump location only)
- Integral E-Z level platform facilitates installation



CODES AND COMPLIANCES

Massachusetts code File no: P1-0614-491



HYDRO SYSTEMS
Family Owned And Operated Since 1978

29132 Avenue Paine, Valencia, CA, 91355
661.775.0686 | hydrosystem.com