

FORCETM



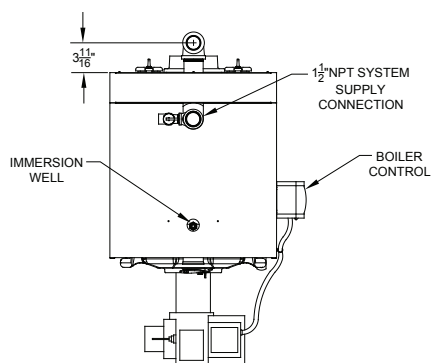
*high efficiency
cast iron
oil-fired boiler*



Standard Features

- Offered exclusively by Ferguson®
- 87% AFUE, ENERGY STAR® certified
- 0.6 to 1.35 GPH in four sizes
- Chimney vented, optional direct vent kit available (sizes 147, 189)
- Integrated boiler control
- 3-pass cast iron heat exchanger
- Fully-opening, reversible, cast iron swing door
- Return water mixing tube
- Cast iron section connectors
- Lifetime limited warranty on heat exchanger

Technical Information



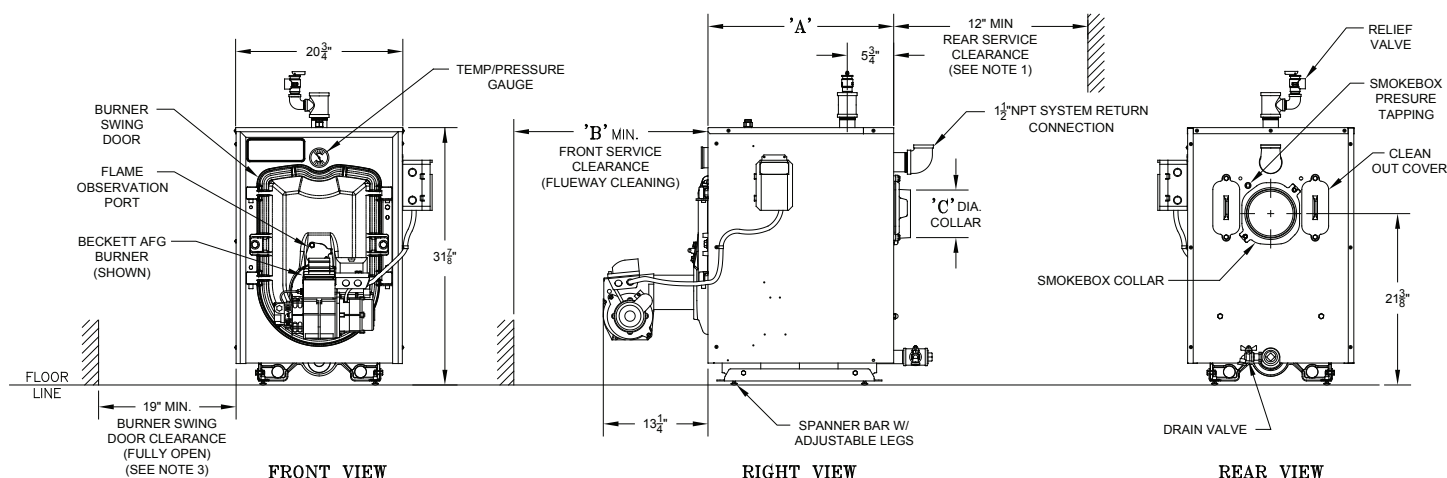
TOP VIEW

Model	Min. Chimney Requirements			Direct Vent System	
	Round Inch Diam.	Rectangle (Inches)	Height (Feet)	Kit Part Number	Vent Connector Diameter (In.)
FORCEOL084	6	8 x 8	15	N/A	N/A
FORCEOL115	6	8 x 8	15	N/A	N/A
FORCEOL147	6	8 x 8	15	106401-01	5
FORCEOL189	7	8 x 8	15	106401-01	5

Note:

Return fittings and drain valve shipped loose.

The manufacturer should be consulted before selecting a boiler for installations having unusual piping and pickup requirements, such as intermittent system operation, extensive piping, etc.



Model	Dimensions (Inches)			AFUE %	Burner Capacity			Net AHRI Ratings (MBH)	Water Content (Gal.)	Heating Transfer Surface Area (Sq. Ft.)	Approximate Shipping Weight (lbs.)
	A	B	C		GPH	MBH	DOE Heating Capacity (MBH)				
FORCEOL084	17	24	5	87	0.60	84	73	63	7.7	13.29	430
FORCEOL115	17	24	5	87	0.80	115	100	87	7.7	13.29	430
FORCEOL147	23	24	6	87	1.05	147	129	112	11.08	20.29	545
FORCEOL189	29	30	6	87	1.35	189	166	144	14.46	27.29	658



The Net AHRI Ratings shown are based on a piping and pickup allowance of 1.15.

Additional Standard Features

- Fully packaged
- Integrated boiler control system
- 3450 RPM flame retention Beckett oil burner
- Beckett GeniSYS primary control
- Return water mixing tube
- Grundfos UPS15-58 circulator
- Electronic ignitor 14KV
- Clean cut fuel pump
- Tridicator
- Relief valve
- Drain valve
- Integrated lifting legs (for level installation)



FERGUSON
Nobody expects more from us than we do®