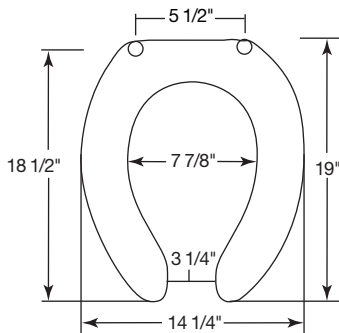




## COMMERCIAL PLASTIC SEATS

### MODEL 295C

- ELONGATED SEAT, OPEN FRONT LESS COVER
- SOLID PLASTIC
- POSTUREPEDIC CONTOUR DESIGN
- CONCEALED 300 SERIES STAINLESS STEEL CHECK HINGES



Ring thickness is 13/16"

Ring thickness including the bumper is 1"

Height of Seat is 2-1/4"

Seats shall be No. \_\_\_\_\_ as manufactured by Church Seats. Seats shall be heavy weight and injection-molded of solid plastic. Seats shall be open front less cover for elongated bowl and feature exclusive Posturepedic contour design and four large molded-in bumpers. Concealed check hinges to feature 300 Series stainless steel posts that stop seat 11 degrees beyond vertical. Uses 300 Series stainless steel hardware. Color to be \_\_\_\_\_. (specify white or fixture manufacturer's color) Hinges shall be \_\_\_\_\_. (specify hinge type)

**295C** Concealed check hinge stops seat 11° beyond vertical.

**295SSC** Self-sustaining, concealed stainless steel check hinge holds seat in any raised position up to 11° beyond vertical.

