

26033CTM – EVERYDAY TUB/SHOWERS

60 x 30 x 75 inches



FEATURES

- Tub-shower
- Textured tile finish
- Ergonomic backrest
- Molded toiletry shelves
- Above-floor rough
- Slip-resistant textured bottom
- Left or right hand drain
- AcrylX™ applied acrylic surface
- Lifetime limited warranty

OPTIONS

- Grab bar reinforcement
- Designer drain, waste & overflow
- Shower Door Series L0516

AQUATIC ADVANTAGE

- National distribution
- 6 manufacturing facilities
- Private fleet
- Centralized customer service
- Field support

COLOR OPTIONS

Stock	Upgraded	Premium
White	Almond Linen/Biscuit Bone	Black Mexican Sand Sand Bar Sterling Silver

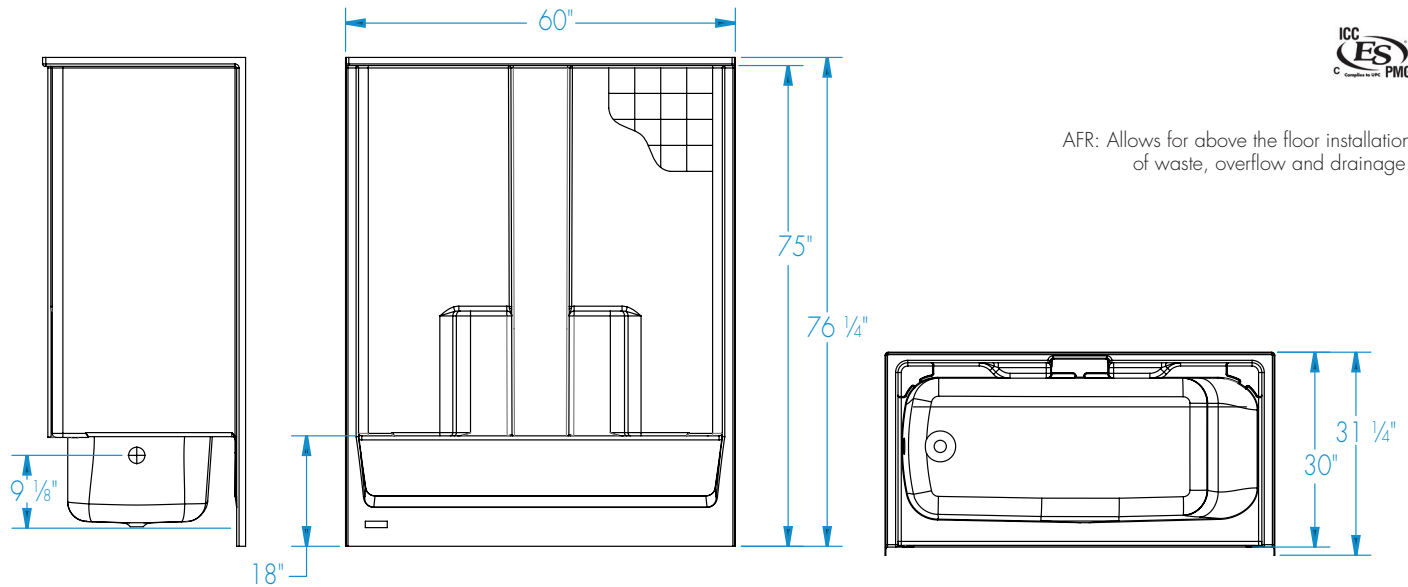


26033CTM

60 x 30 x 75
inches



AFR: Allows for above the floor installation of waste, overflow and drainage.



FEATURES lbs Dimensional Tolerance $\pm \frac{3}{8}$ ". Dimensions needed for site preparation should be measured from the unit. Aquatic assumes no responsibility for preparatory work.

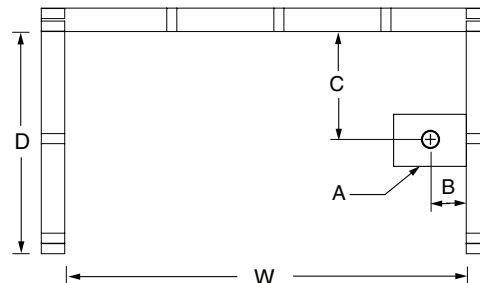
Model #	Material	Wall Finish	Jets	Motor	Controls	Drain	Net Wt.	Pkg. Wt.
AFR Tub-Shower #26033CTM	AcryIX™	Textured Tile	–	–	–	LH or RH	125	130

DIMENSIONS

Specifications	inches
Width: Overall / Net	60
Depth: Overall / Net	31 ¼ / 30
Height: Overall / Net	76 ¼ / 75
Enclosure Opening	56
Skirt Height	18
Drain Rough-In (from Back Wall)	14 ½
Drain Rough-In (from Side Wall)	2
Drain: Diameter / Clearance	2 / 4

FRAMING DIMENSIONS inches

Type	D Depth	W Width	H Height	A	B	C
Alcove	31 ¼	60 ½	–	Box Out	2	14 ½



SUMP DATA

Top of Drain to Bottom of Overflow	Capacity to Overflow gal	Min. Operating Capacity gal	WIDTH @ centerline		DEPTH @ centerline	
			Top	Bottom	Top	Bottom
9 ½	45	–	54 ½	46 ¼	22	21