

For Residential and Commercial Applications

Job Name		Engineer / Architect	
Job Location		Wholesaler	
Submittal Date		Contractor	

DC604 Series Male Iron Pipe Drain Cock (External)

Use: For use with low pressure air, water, gas and fluids (lubricant may not be compatible with some fluids).

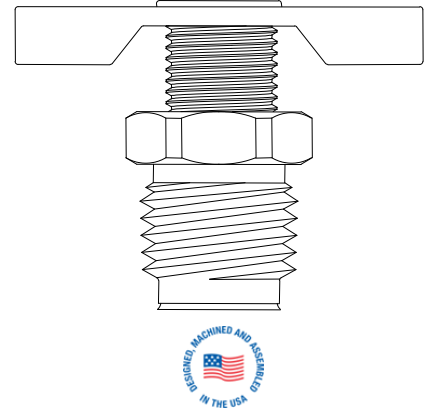
Design Features:

- **Positive seal & flow adjustment** up to the capacity of the valve
- **Metal-to-metal seats** with a fine thread engagement
- **Metal handle** provides a secure grip and smooth on/off operation

Operating Specifications:

Temperature: 32° F to 125° F

Working Pressure: 60 PSI



MATERIAL SPECIFICATIONS

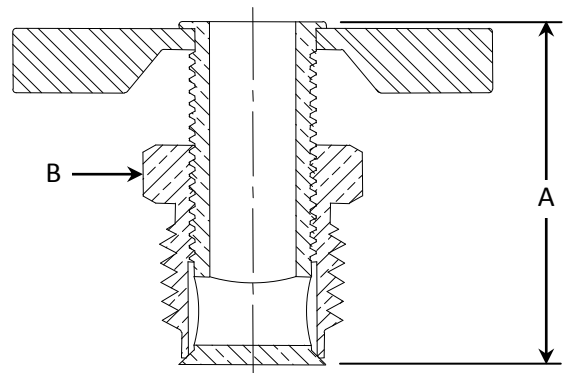
Fitting Body	C36000 brass
Handle	Steel
Threaded Stem	C36000 brass

PART DIMENSIONS (Inches)

Model	DIM. A (closed)	HEX. B
DC604-2	.90	7/16
DC604-4	1.06	9/16

Part Listing:

- ☐ DC604-2 1/8" M.I.P.
- ☐ DC604-2 B 1/8" M.I.P., bulk
- ☐ DC604-4 1/4" M.I.P.
- ☐ DC604-4 B 1/4" M.I.P., bulk
- ☐ DC604-4V B 1/4" M.I.P. with thread sealant, bulk
- ☐ DC604-6 3/8" M.I.P.
- ☐ DC604-6 B 3/8" M.I.P., bulk



This specification and all information contained herein is the confidential and exclusive property of BrassCraft Manufacturing, and shall not be disclosed to others without the written consent of BrassCraft. This specification must be returned to BrassCraft if requested.

BrassCraft®