

## SPECIFICATIONS

### COMO™ SINGLE HANDLE BAR & CONVENIENCE FAUCET

#### Model

D150542

#### Description

- Ceramic disc valve
- 13 1/4" high swivel spout, 5 1/2" spout length
- 4" deck plate D493082 sold separately for single hole mounting
- 1.75gpm (6.6L/min) maximum flow rate @60 psi

#### Standards



NSF/ANSI 372 • NSF/ANSI 372

MEETS ASME  
A112.18.1

• ASME A112.18.1

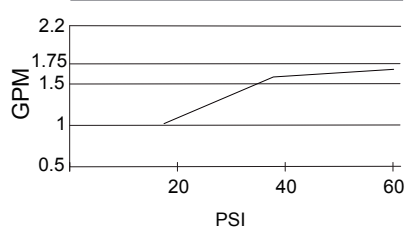


- ADA Accessibility Guidelines for Buildings and Facilities - 309.4 Operation for Operable Parts

#### Warranty

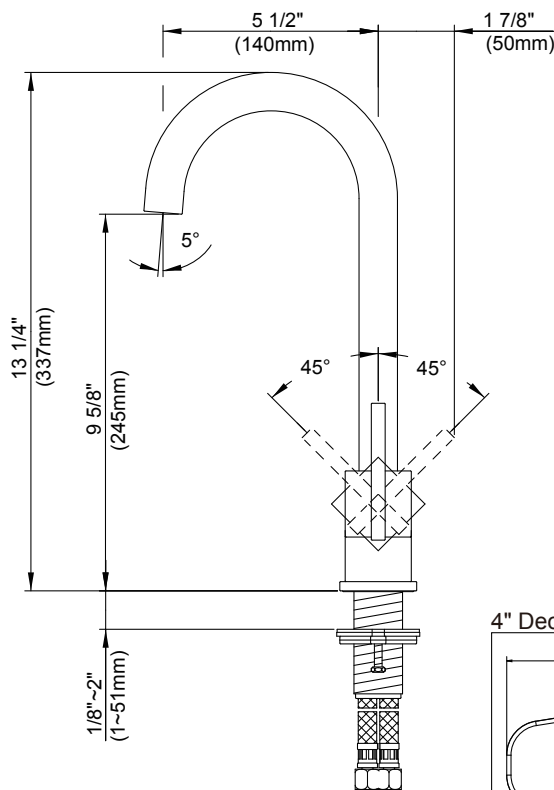
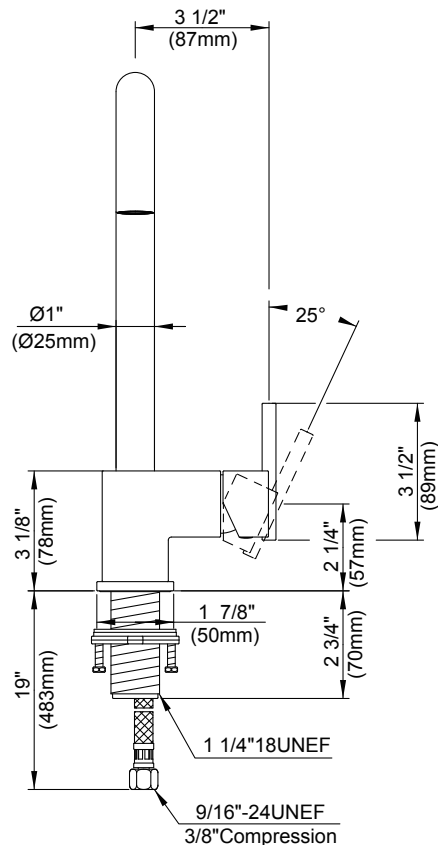
Danze products are covered by a manufacturer's limited "lifetime" warranty for manufacturing defects.

#### Flow Rate

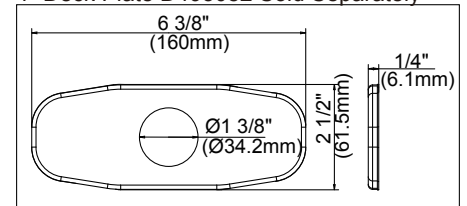


#### Finishes Available

- Chrome
- Other: Refer to Price List for additional finish



#### 4" Deck Plate D493082 Sold Separately



#### Submittal Information:

Job Name: \_\_\_\_\_

Location: \_\_\_\_\_

Contractor: \_\_\_\_\_

Contact #: \_\_\_\_\_