

PFCS100

Complete Kitchen Sink



Product Features

- Includes: double bowl stainless steel sink, single handle faucet and 2 basket strainers

SINK

- Bowl depth 8-1/8"
- Overall size 33" x 22"
- Bowl size 14" x 15-3/4"
- Minimum cabinet size 36"
- 20 GA stainless steel
- Sink clips included
- Self rimming installation

FAUCET

- Flow rate: 1.5 GPM
- Metal lever handle
- Ceramic disc cartridge
- With side sprayer
- 1/2" IPS connections
- Brass Construction
- With 360° swivel spout

BASKET STRAINER

- 430 Stainless Steel body & basket
- Zinc locknut & slipnut



PFCS100

Optional Accessories / Available Parts

PFCLIP	Sink clips
PFG1112	Bottom basin grid
PFX14323	1.0 gpm aerator insert
PF3357061	Cartridge
PF3606301CP	Chrome Side Sprayer with Hose
PF1431SSB	Replacement basket
PFBSG	Replacement 3mm Rubber Locknut Washer

Warranty and Codes

This product comes complete with installation, operating, care and maintenance instructions. This PROFLO faucet carries a limited lifetime warranty when installed in residential applications. The warranty is five years in commercial applications. This product meets ANSI: A112.18.1M. *Compliant with lead content requirements of US Senate Bill S.3874

This PROFLO stainless steel sink carries a 2- year limited warranty. In an effort to continually improve our products, we will make design changes from time to time. We reserve the right to ship newly designed product to fill any order unless it is agreed in writing to do otherwise.

Sink complies with ASME A112.19.3-2008 CSA B45.4-08.



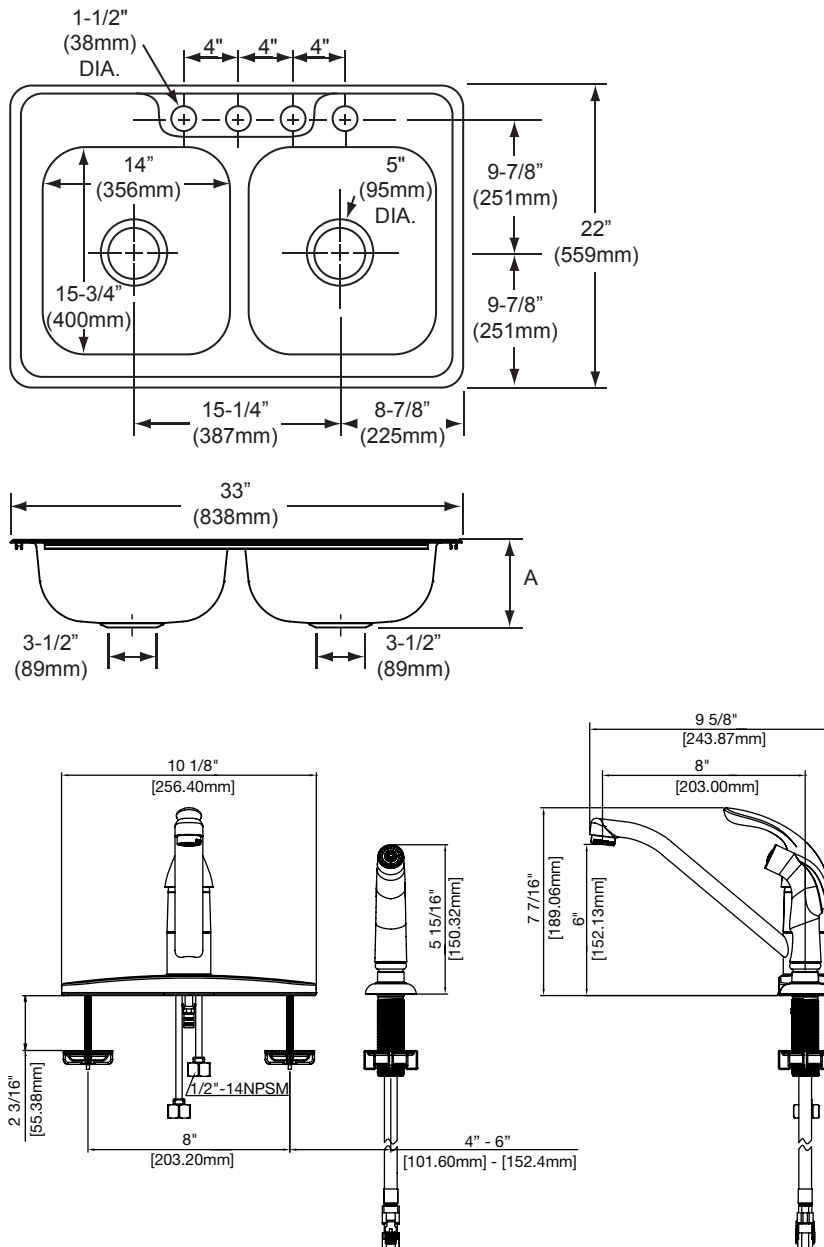
Distributed Exclusively by Ferguson and Wolseley Canada

PFCS100

Complete Kitchen Sink



Product Specifications



* All measurements are nominal. Please verify before actual installation.

