

Features

- Solid metal construction
- Single-post, open roller design
- Complements Newport 365 Bronwen product series

Codes / Standards Compliance

Meets or exceeds the following at date of manufacture:

- All applicable US Federal and State material regulations

Colors / Finishes

- 15: Polished Nickel
- 15S: Satin Nickel - PVD
- 26: Polished Chrome

Toilet Tissue Holder

82-27



Specified Model

Model	Description	Colors Finishes
82-27	Toilet Tissue Holder	<input type="checkbox"/> 15 <input type="checkbox"/> 15S <input type="checkbox"/> 26

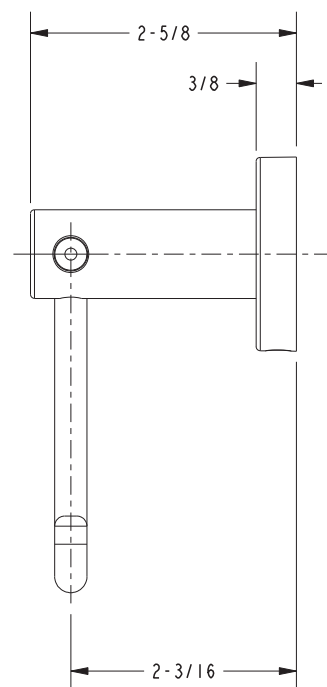
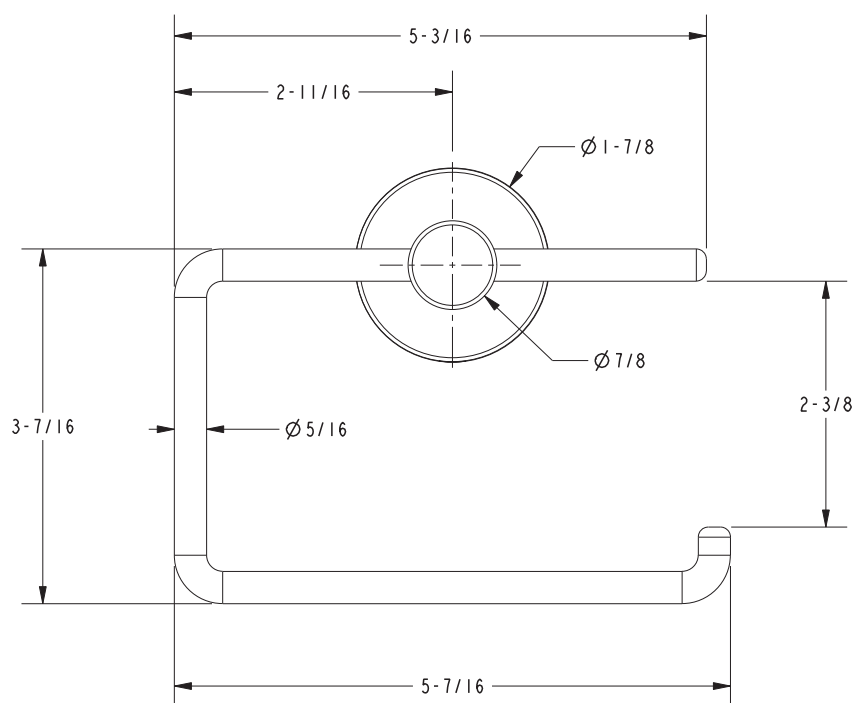
Product Specification

Add "Length Indicator and Color / Finish" suffix to Model number, below.

The Toilet Tissue Holder shall be made of solid metal construction and incorporate a single-post, open roller design. Toilet Tissue Holder shall complement Newport 365 Bronwen product series. Toilet Tissue Holder shall be Newport 365 Model 82-27/_____.

82-27

PRODUCT DIMENSIONS *(Units are in inches)*



Newport 365 Toilet Tissue Holder 82-27