

33" SITKA

STAINLESS STEEL UNDERMOUNT KITCHEN SINK - SINGLE-HOLE

SKU: 948479



FEATURES

- Minimum Cabinet Size: 36".
- Type 304 stainless steel.
- It is recommended to have the sink at the job site before cutting cabinet or counter top.
- Sound absorption pads on the underside of sink.
- Has an undercoating to prevent condensation buildup.

SIGNATURE HARDWARE Lifetime Warranty

See website for detailed warranty information.

CONTENTS

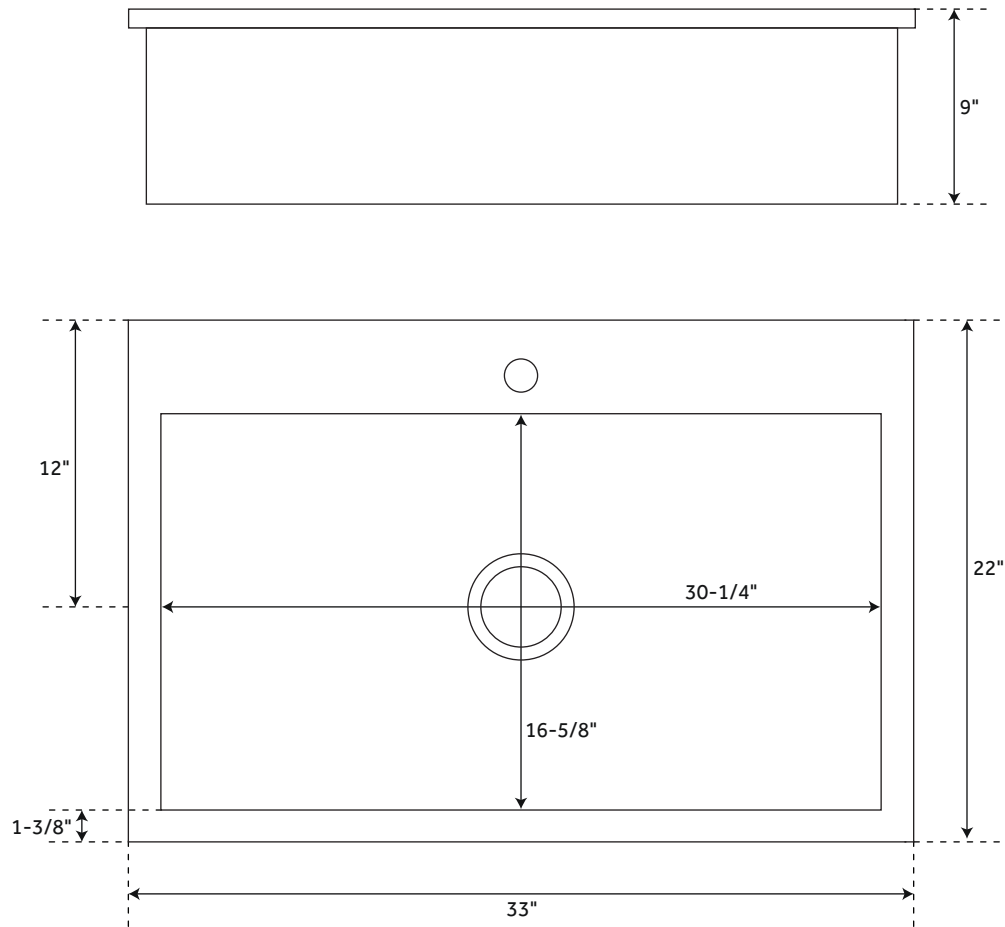
SINK	PAGE 2
GRID	PAGE 3

REVISED 01/22/2020

33" SITKA

STAINLESS STEEL UNDERMOUNT KITCHEN SINK - SINGLE-HOLE

SKU: 948479



FEATURES

Material: Stainless Steel
Basin Split: Single
Shape: Rectangle
Sink Installation: Undermount
Faucet Centers: Single-Hole Centered
Number of Basins: 1
Product Color: Stainless Steel
Length: 33"
Width: 22"
Height: 9"
Basin Length: 30-1/4"
Basin Width: 16-5/8"
Metal Gauge/Thickness: 16
Faucet Included: No
Faucet Holes: 1
Drain Placement: Center
Drain Included: Optional
Fits Drain Hole Size: 3-1/2"
Mounting Hardware Included: Yes

CODES/STANDARDS

cUPC
ASME A112.19.3/CSA B45.4



SIGNATURE HARDWARE LIFETIME WARRANTY

See website for warranty information

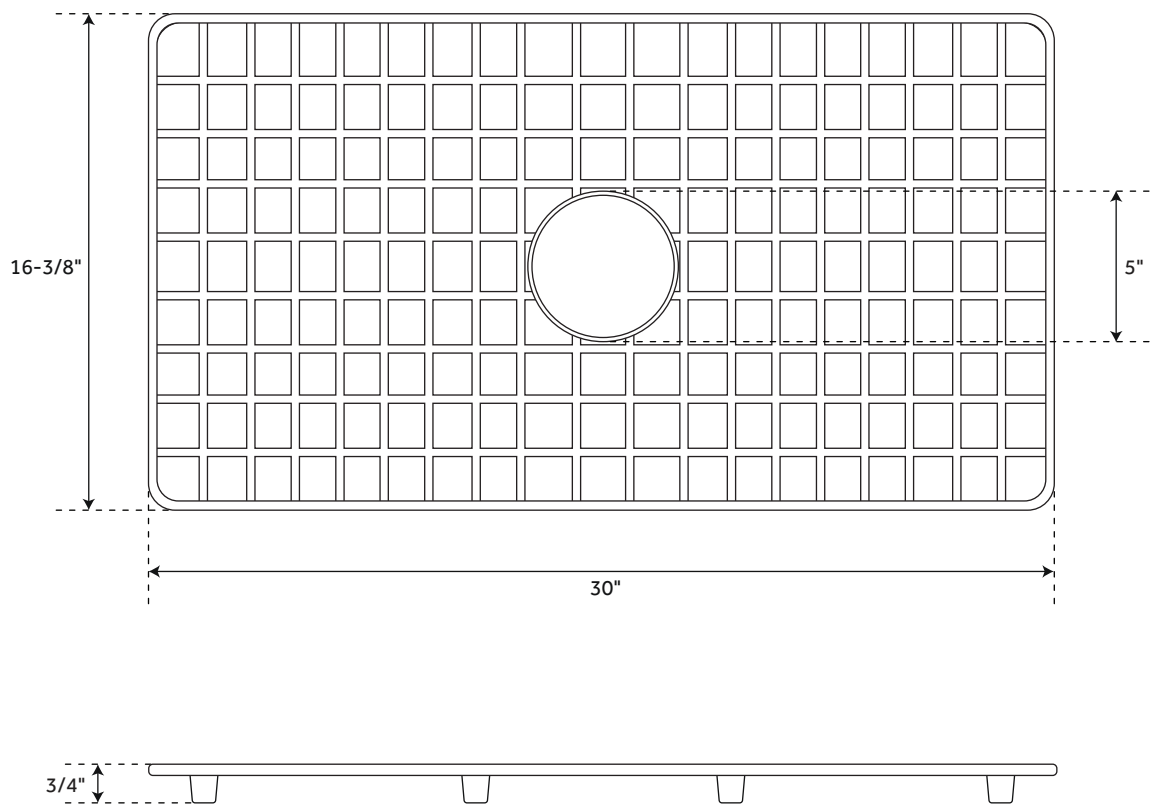


All dimensions and specifications are nominal and may vary. Use actual products for accuracy in critical situations.

PAGE 2
Code: SHSKDM1BZ1

SINK GRID

FOR 33" SITKA STAINLESS STEEL KITCHEN SINK
SKU: 948479

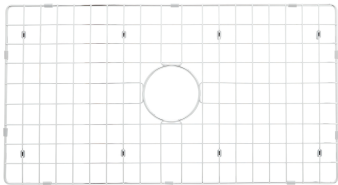


FEATURES

- Material: Stainless Steel
- Length: 30"
- Width: 16-3/8"
- Height: 3/4"
- Drain Size: 5"

**SIGNATURE HARDWARE
LIFETIME WARRANTY**

See website for warranty information



All dimensions and specifications are nominal and may vary. Use actual products for accuracy in critical situations.