

Rampart series - PFB14CRS2 / PFB14CLS2



Enameled Steel Soaking Tub 60" x 30"

Product Features

- Chemically Bonded enameled steel bathtub
- 60" x 30" x 14-1/4"
- 60" x 30" x 16-5/8" AFR
- High-density molded backing deadens noise, retains heat and resists impact damage
- Full length tile flange
- Standard and above floor rough-in
- High gloss, stain resistant porcelain finish
- Non-skid bottom surface
- Available in white, bone, biscuit
- Integral molded leveling feet
- Weight: 80 lbs



PFB14CRS2WH

Available Colors

- White
- Biscuit
- Bone

Model Numbers

PFB14RS2	60" x 30" x 14-1/4" bathtub - RH
PFB14LS2	60" x 30" x 14-5/8" bathtub - LH
PFB16RS2	60" x 30" x 16-5/8" bathtub - RH above floor RI
PFB16LS2	60" x 30" x 16-5/8" bathtub - LH above floor RI

Warranty and Codes

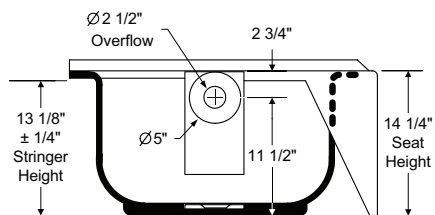
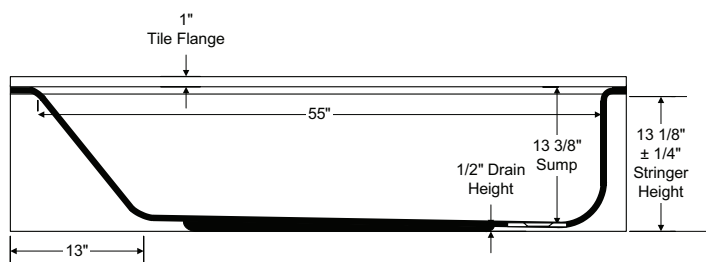
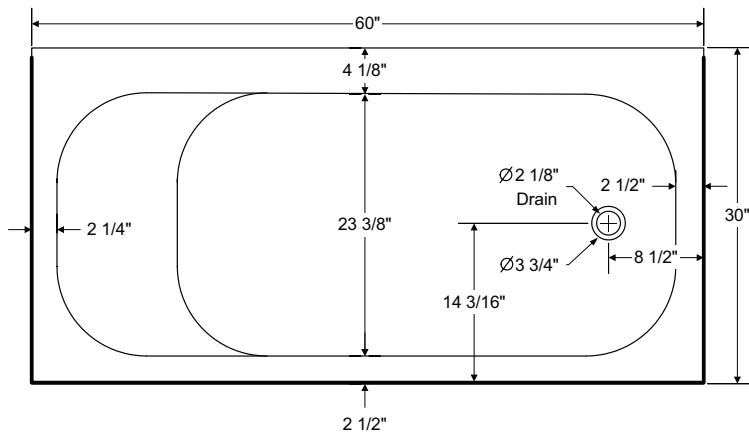
These products come complete with installation, operating, care and maintenance instructions. PROFLO S2 Series Enameled Steel baths carry a limited lifetime warranty. These products meet or exceed ASME/ANSI A112.19.4M.

Rampart series - PFB14CRS2 / PFB14CLS2



Enameled Steel Soaking Tub 60" x 30"

Standard Rough-in: PFB14RS2/PFB14LS2



Above Floor Rough-in: PFB16RS2/PFB16LS2

