

GENERAL DESCRIPTION:

SHOWERHEAD

Offers performance and water savings at a 1.8 gpm/6.8L/min. flow rate.

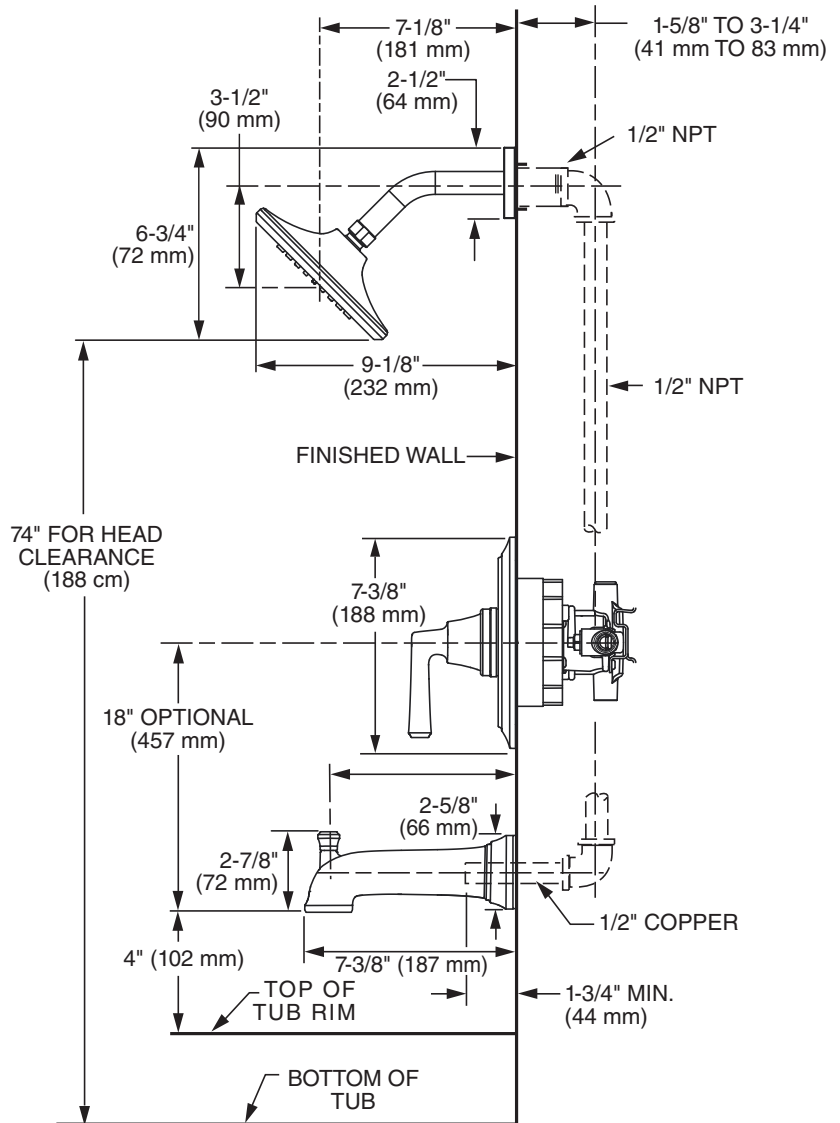
WALL TUB SPOUT

Metal slip-on diverter spout.

WALL VALVE TRIM

Metal lever handle.

Metal wall escutcheon.



ADA COMPLIANT



EPA
WATERSENSE®
CERTIFIED

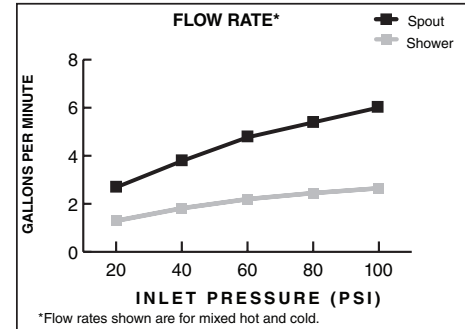
SUGGESTED SPECIFICATION

Bath/shower fitting shall feature rain showerhead with Max. 1.8 gpm/6.8L/min. flow rate. Fitting shall be: American Standard - Trim Kit Model # T45550___ and Valve Body Model #R11__.

CODES AND STANDARDS

These products meet or exceed the following codes and standards:

ANSI A 117.1
ASSE 1016
ASME A112.18.1
CSA B 125.1



TRIM KITS *	Product Number	Description		Finish Options			
				Polished Chrome	PVD Brushed Nickel	Polished Nickel	Legacy Bronze
				002	295	013	278
	T455508	Bath/Shower Trim Kit. LESS Valve Body.	ADA				
	T455507	Shower Only Trim Kit. LESS Valve Body.	ADA				

ROUGH VALVE BODIES	Product Number	Description
	R111	Rough Valve Body less trim. Universal inlets/outlets.
	R111SS	Rough Valve Body less trim. Universal inlets/outlets with Screwdriver Stops.
	R115	Rough Valve Body less trim. Female Thread inlets/outlets.
	R115SS	Rough Valve Body less trim. Female Thread inlets/outlets with Screwdriver Stops.
	R117	Rough Valve Body less trim. PEX inlets/universal outlets for Crimp Ring PEX system (ASTM F1807).
	R117SS	Rough Valve Body less trim. PEX inlets/universal outlets for Crimp Ring PEX system (ASTM F1807) with Screwdriver Stops.
	R118	Rough Valve Body less trim. PEX inlets/universal outlets for Cold Expansion PEX system (ASTM F1960).
	R118SS	Rough Valve Body less trim. PEX inlets/universal outlets for Cold Expansion PEX system (ASTM F1960) with Screwdriver Stops.
	R119	Rough Valve Body less trim. CPVC inlets/universal outlets.
	R119SS	Rough Valve Body less trim. CPVC inlets/universal outlets with Screwdriver Stops.

ADA Meets the American Disabilities Act Guidelines and **ANSI A117.1** Requirements for the physically challenged.