



PF1201/PF3112

PRODUCT FEATURES

- Vitreous china, available 10", 12", 14" RI
- Stylish tank design
- Gravity fed (1.6gpf/6.0Lpf)
- Box rim with integral jets
- 2" trapway
- 8" x 9" water surface
- Close coupled tank with cover
- Anti-siphon ballcock prevents back-siphoning
- Sanitary bar on all bowls
- Quick connect, 2 bolt tank to bowl installation
- Color matched trip lever
- Available with Fluidmaster upgrade
- Available with RH trip lever
- Available with insulated tank
- Available round front, elongated and ADA
- Seat and supply not included

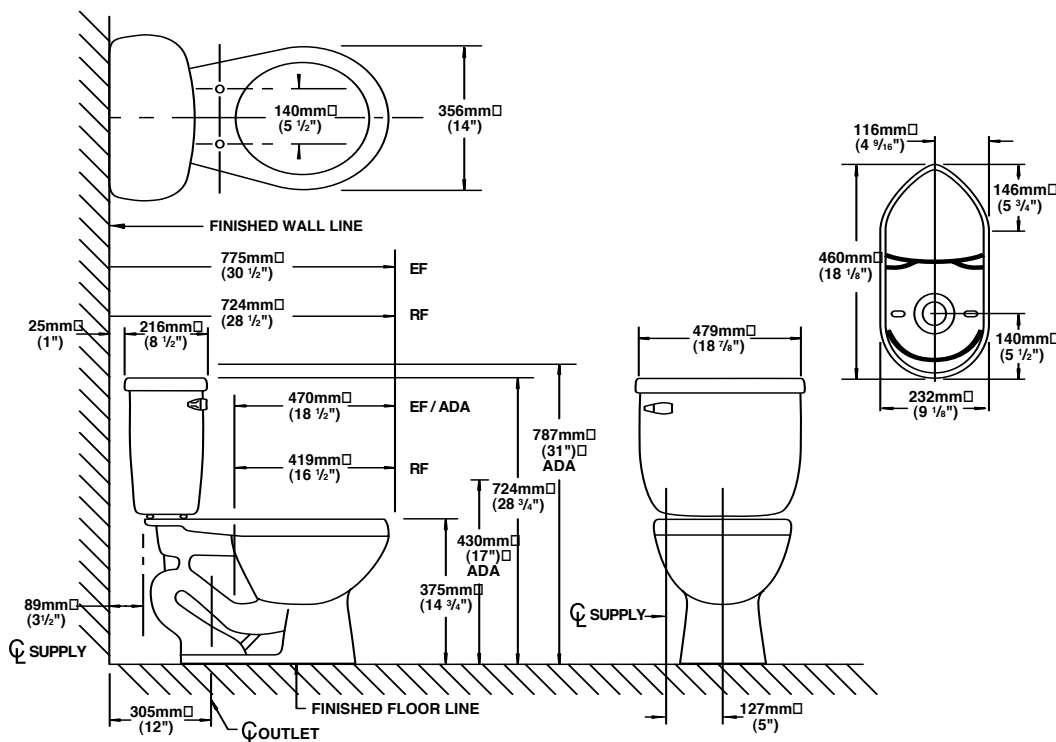
PROFLO®

COLOR PALETTE

- | | |
|----------------------------------|---------------------------------|
| <input type="checkbox"/> White | <input type="checkbox"/> Almond |
| <input type="checkbox"/> Biscuit | <input type="checkbox"/> Bone |

PRODUCT SPECIFICATIONS

PF1200/PF1201/PF1203/PF3112/PF1203



MODEL NUMBERS

- | | |
|------------|--|
| PF1200 | BWL ONLY BOX RIM RF |
| PF1201 | BWL ONLY BOX RIM EB |
| PF1203 | BWL ONLY BOX RIM ADA |
| PF3112 | TANK ONLY 12" RI FOR 1200 SERIES |
| PF3312 | TANK WITH FLUIDMASTER 400A, FOR 12" RI |
| PF3110 | TANK ONLY 10" RI FOR 1200 SERIES |
| PF3114 | TANK ONLY 14" RI FOR 1200 SERIES |
| PF140935PK | BALLCOCK ASSY F/PF 3112 TANK |
- *ADD "R" TO TANK FOR RH TANK LEVER (3112 ONLY)
 *ADD "U" TO TANK FOR INSULATED TANK (3112 ONLY)



WARRANTY AND CODES

This product comes complete with installation, operating, care and maintenance instructions. All PROFLO fixtures carry a 1-year limited warranty. This product meets or exceeds ASME/ANSI A112.19.2M. In an effort to continually improve our products, FEI will make design changes from time to time. We reserve the right to ship newly designed product to fill any order unless we agree in writing to do otherwise.



PF2201/PF3212

PRODUCT FEATURES

- Vitreous china, available 10", 12", 14" RI
- Gravity fed (1.6gpf/6.0Lpf)
- Continuous integral open rim
- 2" trapway
- 8" x 9" water surface
- Close coupled tank with cover
- Anti-siphon ballcock prevents back-siphoning
- Sanitary bar on all bowls
- Quick connect, 2 bolt tank to bowl installation
- Color matched trip lever
- Available with Fluidmaster upgrade
- Available with RH trip lever
- Available with insulated tank
- Available round front, elongated and ADA
- Seat and supply not included

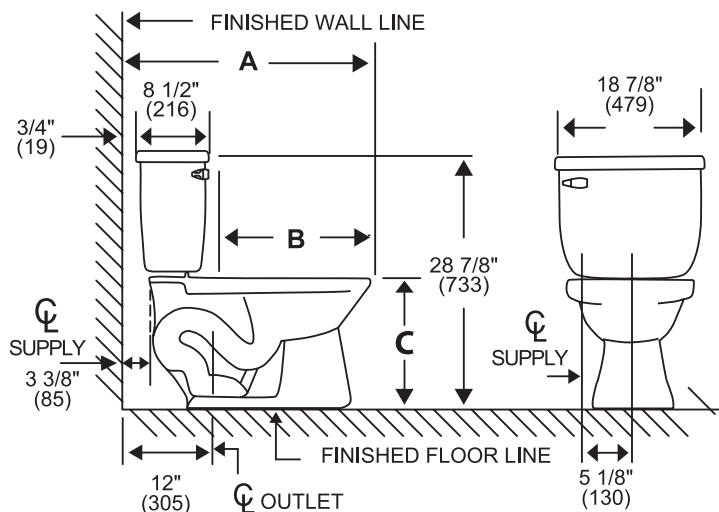


COLOR PALETTE

- ☐ White
- ☐ Almond
- ☐ Biscuit
- ☐ Bone

PRODUCT SPECIFICATIONS

PF2200/PF2201/PF2203/PF3212/PF2203



	PF2200	PF2201	PF2203
A	27 3/4" (705)	29 1/2" (749)	30 1/2" (775)
B	16 1/2" (419)	18 1/2" (470)	18 1/2" (470)
C	14 1/2" (368)	14 1/2" (368)	17" (432)

Dimensions may vary (+) or (-) 1/4" (6) Dimensions shown in parentheses are in millimeters: 25.4mm = 1 inch.

NOTE: Fixture dimensions are nominal and conform with dimension and performance requirements of ASME/ANSI Standards A112.19.2M. Dimensions subject to change or cancellation without notice. Briggs is not responsible for the use of superceded or voided specification information.

MODEL NUMBERS

- PF2200 BWL ONLY OPEN RIM RF
- PF2201 BWL ONLY OPEN RIM EB
- PF2203 BWL ONLY OPEN RIM ADA
- PF3212 TANK ONLY 12"RI FOR 2200 SERIES
- PF3312 TANK WITH FLUIDMASTER 400A, FOR 12" RI
- PF3210 TANK ONLY 10"RI FOR 2200 SERIES
- PF3214 TANK ONLY 14"RI FOR 2200 SERIES
- PF140934PK BALLCOCK ASSY F/PF 3212 TANK
- *ADD "R" TO TANK FOR RH TANK LEVER (3212 ONLY)
- *ADD "U" TO TANK FOR INSULATED TANK (3212 ONLY)



WARRANTY AND CODES

This product comes complete with installation, operating, care and maintenance instructions. All PROFLO fixtures carry a 1-year limited warranty. This product meets or exceeds ASME/ANSI A112.19.2M. In an effort to continually improve our products, FEI will make design changes from time to time. We reserve the right to ship newly designed product to fill any order unless we agree in writing to do otherwise.