

## 17550 SERIES

## FLOOR-MOUNT, Hanger Plate Type

### APPLICATION

For use with lavatories furnished with hangers that require a carrier for support and where thin wall construction demands uprights that support the fixture completely independent of the wall.

### SPECIFICATION

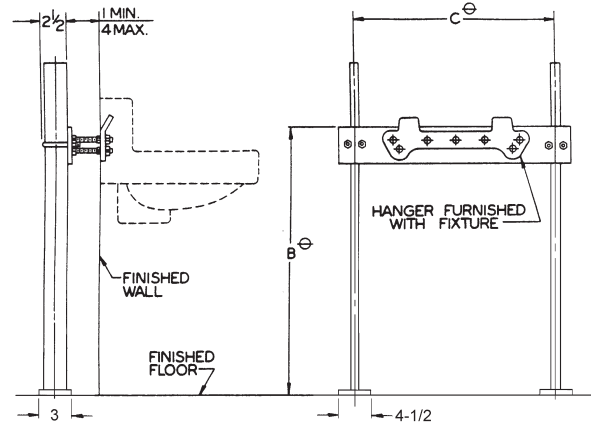
JOSAM 17550 Series floor-mounted, single Lavatory Carrier with hanger plate, adjustable supporting rods, structural uprights and welded feet.

### Available Options

▼ -BB	Back-to-Back Carrier	-10	Hardware for Walls over 4", Specify Wall Thickness
▼ -CL	Corner Lavatory Carrier		
▼ -UR	Urinal Carrier	-60	Valve Plate for Attaching to Upright
▼ -WC	Water Cooler Carrier		
▼ -WCBL	Water Cooler Bi-Level Carrier		

⊖ VARIABLE – DEPENDS ON FIXTURE EXCEPT WHEN STD. PLATE IS FURNISHED. C=18-1/4".  
RECOMMEND ALL FEET BE SECURED TO FLOOR WITH 1/2" BOLTS AND ANCHORS BY OTHERS.

REUSABLE ALIGNMENT TOOL  
AVAILABLE. SEE PAGE 45.



34 LBS

## 17550-BB SERIES

## FLOOR-MOUNT, -BB Back-to-Back

### APPLICATION

For use with back-to-back lavatories. Furnished with hangers that require a carrier for support and where thin wall construction demands uprights that support the fixture completely independent of the wall.

### SPECIFICATION

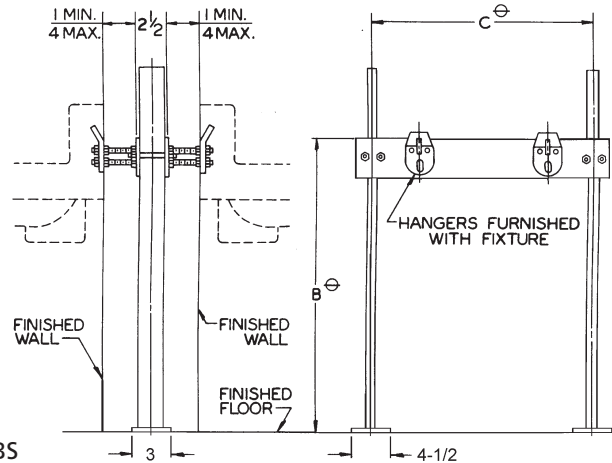
JOSAM 17550-BB Series floor-mounted, back-to-back Lavatory Carrier with hanger plates, adjustable supporting rods, structural uprights and welded feet.

### OPTIONS N/A:

-CL, -UR, -WC, -WCBL

⊖ VARIABLE – DEPENDS ON FIXTURE EXCEPT WHEN STD. PLATE IS FURNISHED. C=18-1/4".  
RECOMMEND ALL FEET BE SECURED TO FLOOR WITH 1/2" BOLTS AND ANCHORS BY OTHERS.

REUSABLE ALIGNMENT TOOL  
AVAILABLE. SEE PAGE 45.



34 LBS

## 17550-UR SERIES

## FLOOR-MOUNT, -UR Urinal Carrier

### APPLICATION

For use with urinals furnished with hangers that require a carrier for support and where thin wall construction demands uprights that support the fixture completely independent of the wall.

### SPECIFICATION

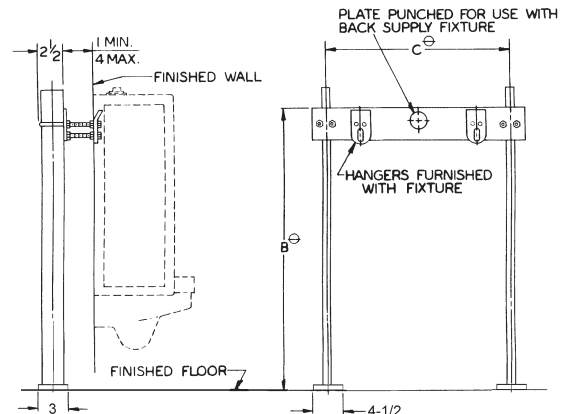
JOSAM 17550-UR Series floor-mounted single Urinal Carrier with hanger plate, adjustable supporting rods, structural uprights and welded feet.

### OPTION N/A

-60

⊖ VARIABLE – DEPENDS ON FIXTURE EXCEPT WHEN STD. PLATE IS FURNISHED. C=18-1/4".  
RECOMMEND ALL FEET BE SECURED TO FLOOR WITH 1/2" BOLTS AND ANCHORS BY OTHERS.

REUSABLE ALIGNMENT TOOL  
AVAILABLE. SEE PAGE 45.



32 LBS

## 17550-WC SERIES

## FLOOR-MOUNT, -WC Water Cooler Carrier

### APPLICATION

For use with water coolers furnished with hangers that require a carrier for support and where thin wall construction demands uprights that support the fixture completely independent of the wall.

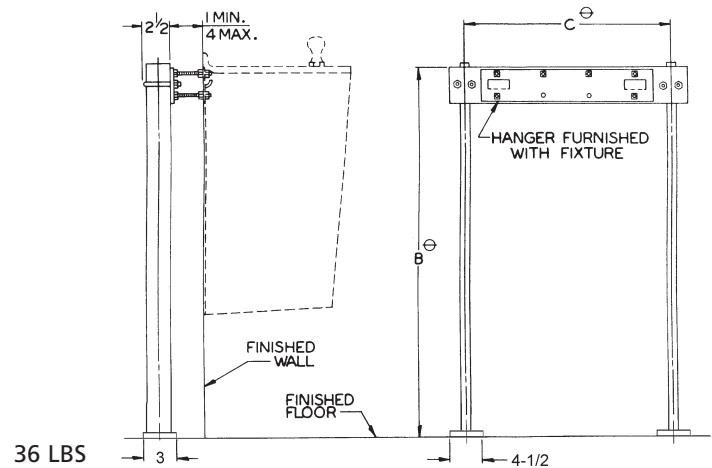
### SPECIFICATION

JOSAM 17550-WC Series floor-mounted single Water Cooler Carrier with hanger plate, adjustable supporting rods, structural uprights and welded feet.

OPTION N/A  
-60

⊖ VARIABLE – DEPENDS ON FIXTURE EXCEPT WHEN STD. PLATE IS FURNISHED. C=18-1/4".  
RECOMMEND ALL FEET BE SECURED TO FLOOR WITH 1/2" BOLTS AND ANCHORS BY OTHERS.

REUSABLE ALIGNMENT TOOL  
AVAILABLE. SEE PAGE 45.



## 17550-WCBL SERIES

## FLOOR-MOUNT, -WCBL Water Cooler Bi-Level Carrier

### APPLICATION

For use with bi-level water coolers furnished with hangers that require a carrier for support and where thin wall construction demands uprights that support the fixture completely independent of the wall.

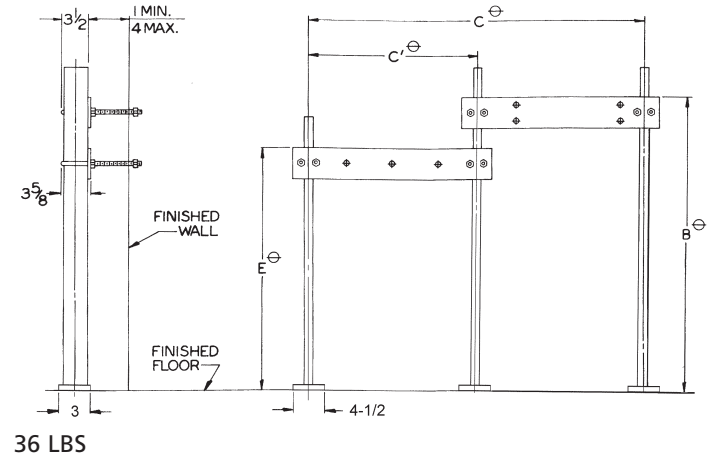
### SPECIFICATION

JOSAM 17550-WCBL Series floor-mounted bi-level Water Cooler Carrier with hanger plates and adjustable supporting rods, structural uprights and welded feet.

OPTION N/A  
-60

⊖ VARIABLE – DEPENDS ON FIXTURE.  
RECOMMEND ALL FEET BE SECURED TO FLOOR WITH 1/2" BOLTS AND ANCHORS BY OTHERS.

UTILIZE A SINGLE ALIGNMENT TOOL TO ALIGN A PAIR OF UPRIGHTS. IF YOU WISH TO BRACE ALL THREE UPRIGHTS SIMULTANEOUSLY, TWO TOOLS ARE NECESSARY. SEE PAGE 45.



## 17550-CL SERIES

## FLOOR-MOUNT, -CL Corner Lavatory Carrier

### APPLICATION

For use with corner lavatories furnished with hangers that require a carrier for support and where thin wall construction demands uprights that support the fixture completely independent of the wall.

### SPECIFICATION

JOSAM 17550-CL Series floor-mounted single Lavatory Carrier for supporting corner type lavatories with hanger plates, adjustable supporting rods, structural uprights and welded feet.

⊖ VARIABLE – DEPENDS ON FIXTURE.  
RECOMMEND ALL FEET BE SECURED TO FLOOR WITH 1/2" BOLTS AND ANCHORS BY OTHERS.

